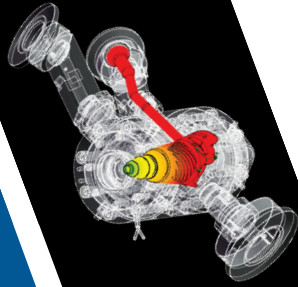


**Guill**  
EXTRUSION TOOLING



# STRAND PELLETIZING

ISO-9001 CERTIFIED

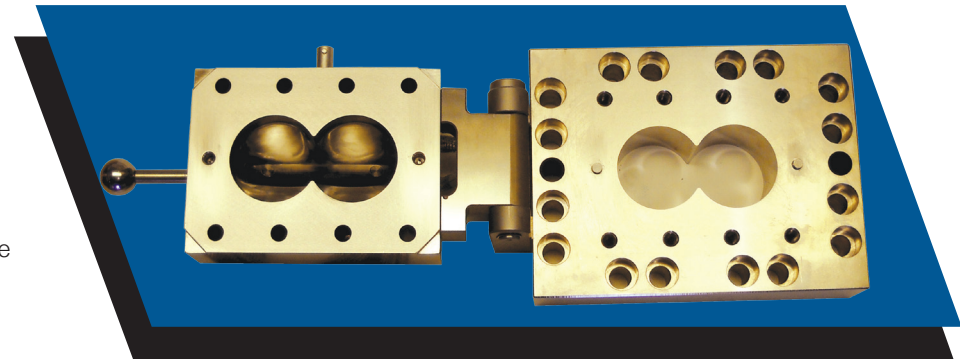
Utilizes state-of-the-art 3D CAD, CFD and FEA software to design a broad spectrum of tooling.



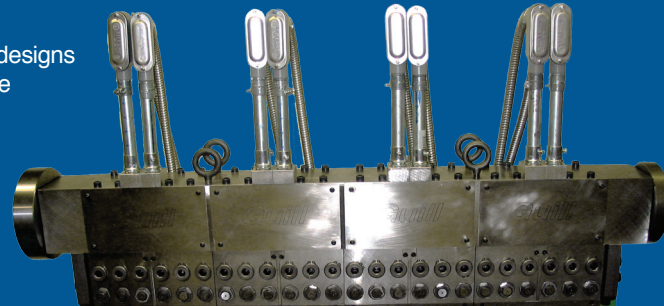
*Photos & CAD shown are representative of Guill's growing line of Strand Pelletizing tooling. For the latest tooling design information ask your sales representative or contact Guill today.*

## 100 SINGLE OR TWIN SCREW STRAND PELLETIZING

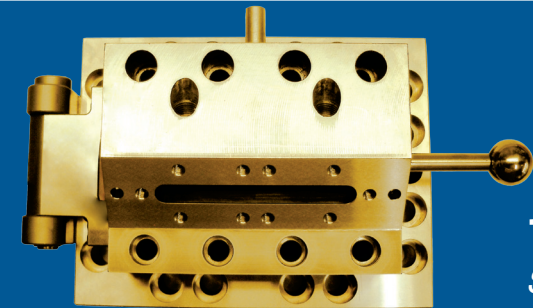
- ▼ Available in two configurations
  - Swing-away or bolt-on assembly
  - Single piece 8 to 0 transition
- ▼ Two pieces clamp together - the 8 to 0 opens to the extruder screw shaft assembly for ease of removal
- ▼ Readily adapts or attaches to the extruder or compounder
  - ▼ Custom designs available



Optional  
Custom designs  
available



*To view the benefits of Guill crossheads and dies, see page 2.*



**100**  
SERIES

# BUILDING PRECISION TOOLING FOR BETTER EXTRUSION

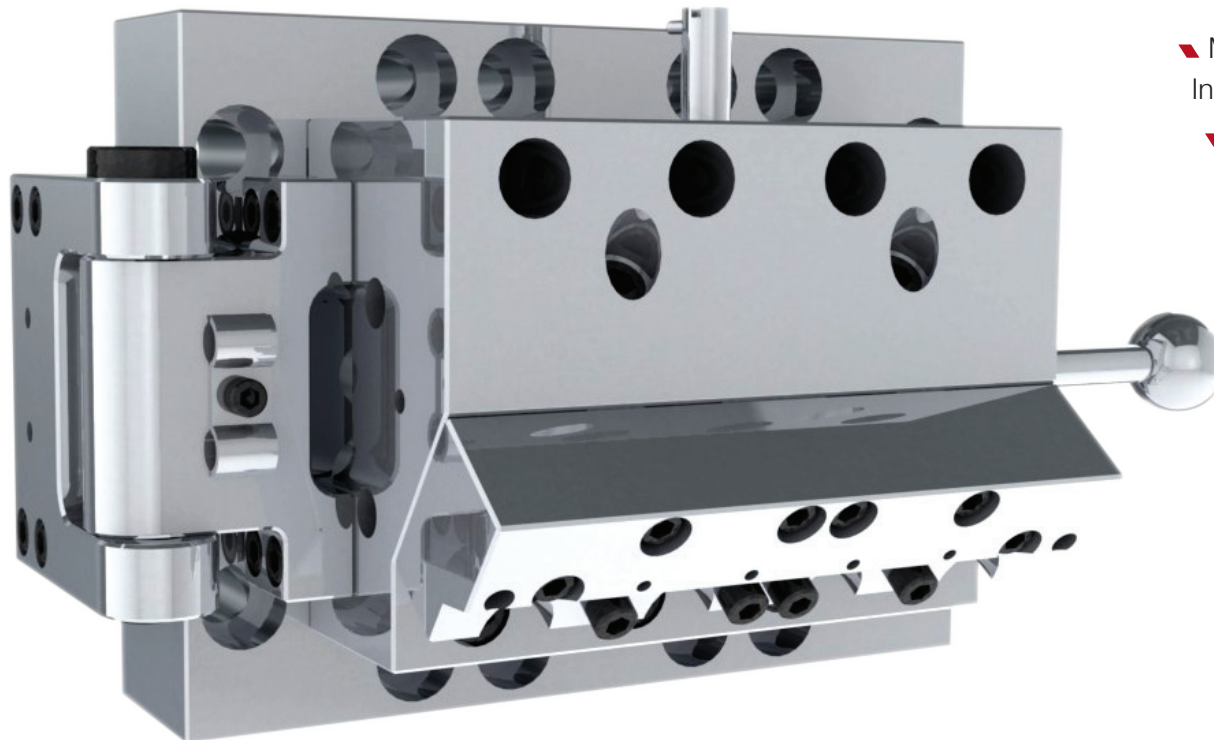
## ISO-9001 CERTIFIED

GUILL TOOL & ENGINEERING CO., INC. IS COMMITTED TO MEETING THE NEEDS OF OUR CUSTOMERS. REQUIREMENTS OF ANSI/ASQC Q9001-2000 INTERNATIONAL STANDARDS (ISO 9001) ARE COMMUNICATED AND MAINTAINED AT ALL LEVELS OF THE COMPANY THROUGH TRAINING, INTERNAL AUDITS AND INTERNAL COMMUNICATION. EACH PERSON IN OUR COMPANY IS DEDICATED TO DELIVERING QUALITY PRODUCTS AND OUTSTANDING SERVICE.

- ▶ CUSTOM DESIGNS AVAILABLE
- ▶ GUILL EXTRUSION DIES RANGE FROM 0.127 MM (.005") DIAMETER MULTI-LAYER TUBES TO 508 MM (20.00") DIAMETER PIPES

## 100 SERIES

*SINGLE OR TWIN SCREW STRAND PELLETIZING*



## Optional Features

- ▶ Material of construction – Stainless Steel, D-2 Tool, Inconel, Hastelloy, Nitrated Steel
- ▶ Interchangeable die-plates
- ▶ Breaker plates
- ▶ Cartridge, Mica or cast bronze heaters
- ▶ Swing-away or bolt-on assembly
- ▶ Custom die plates for food processing

## Additional Features

- ▶ Detailed digital operator manual